



TK2L Newsletter

WEEK OF 2/24/25



SAVE THE DATE!

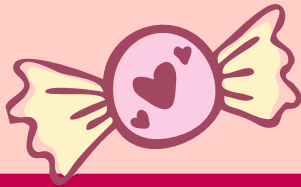
Does your child have a talent that they want to share? Auditions for this year's Talent Share take place this week during lunch in Ms. Dyer's hub. See attached flyer and encourage your student to share their talents with their friends.

RE-ENROLLMENT

Enrollment has opened up to the public. If you have not re-enrolled your student please do so now. We are not holding any spots so it's important to turn in the registration packet to reserve your student's spot for the 25/26 school year. We hope to see every one of our friends return for the 25/26 school year!

COMING EVENTS

2/25 -- Sec. Sports Club -- 3:15 - 4:15
2/25 -- Lego Club -- 3:15 - 4:15
2/27 -- Elem. Sports Club -- 3:15 - 4:15
2/24-28 -- Dr. Seuss Week
2/28 -- Sweet Snack Sale
3/4 -- Sec. Sports Club
3/4 -- Lego Club
3/5 -- Park Day -- Cherry Lake
3/6-7 -- Teacher Work Days (NO SCHOOL)
3/8-16 -- Spring Break (NO SCHOOL)



NEEDS

We are still in need of the following:
individually wrapped snacks
water bottles
paper towels
Please drop off at the front office.

We appreciate your generosity!

SWEET SNACK SALE

PTF will be having their monthly Sweet Snack Sale this Friday. If you already ordered on 1/31 when we had to cancel the sale please do not order again, we will give your student credit this month.

Please see the link to pre-order online in the body of this email.

